

Charlton Girl - for Auntie Shirl

Judy Turner

Violin

5 Vln.

11 Vln.

17 Vln.

23 Vln.

29 Vln.

35 Vln.

41 Vln.

47 Vln.

56 Vln.

60 Vln.

Chord symbols: C, Em, F, G⁷, G, F⁷, C, Em, F, G, C, end

Pirate Pete's Polka

Linda Rankin

Violin

Violin

Violoncello

G G D

pizz arco pizz

pizz

3

Vln.

Vln.

Vc.

G C D 1.G 2.G C C D

arco

pizz

8

Vln.

Vln.

Vc.

C G D C C D G C D G C

15

Vln.

Vln.

Vc.

C D C G D Em Em D G C D G

Take the Tunnel

41
Mand.

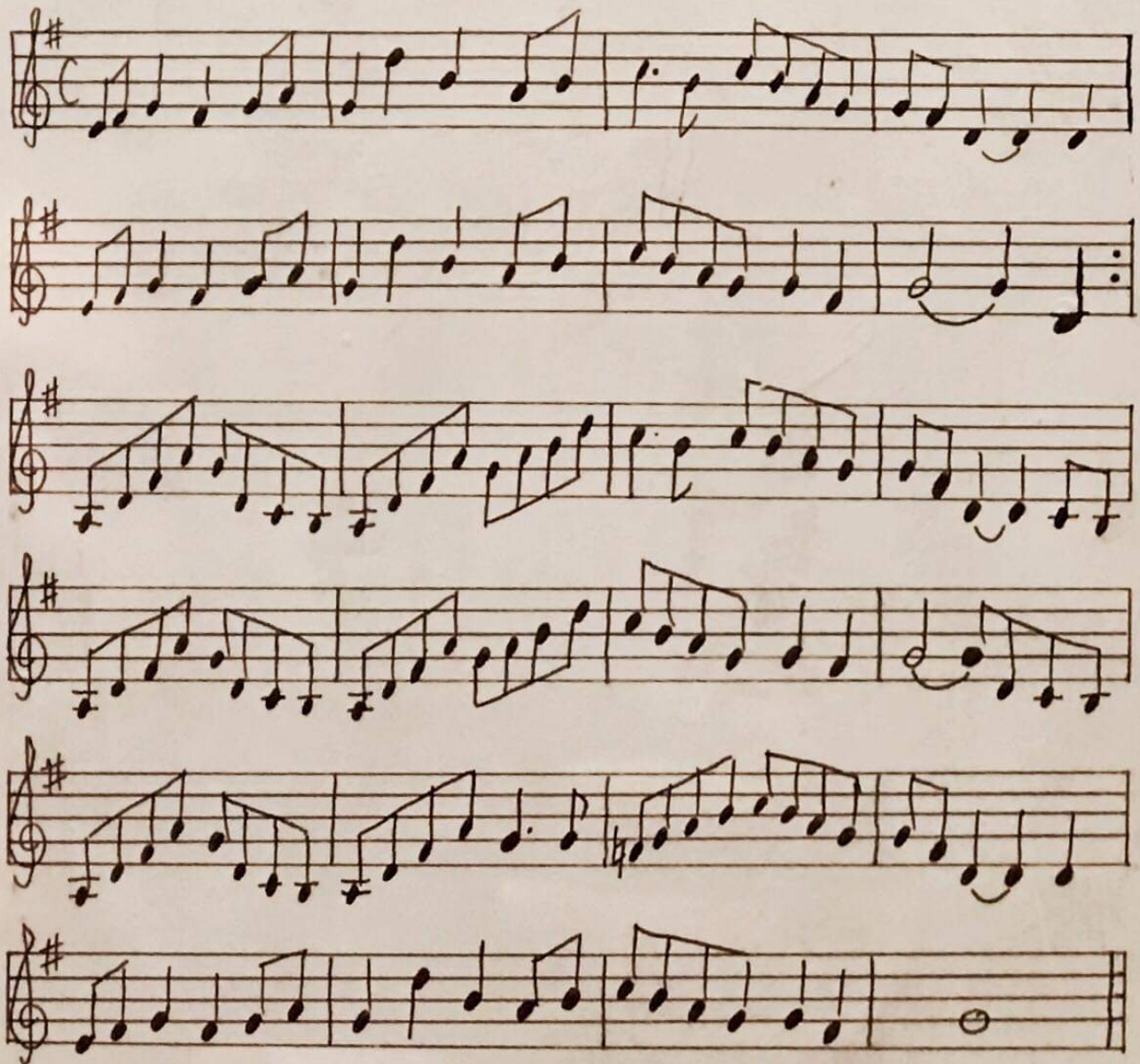
45
Mand.

49
Mand.

53
Mand.

~ Lucy's 2 ~

N. Kerr



happy birthday,
Lucy!



with love, nancy & james

Melbourne

Ross Couper

The musical score for 'Melbourne' is written in 6/8 time and D major. It consists of six staves of music. The first staff begins with a treble clef, a key signature of two sharps (D major), and a 6/8 time signature. The melody is accompanied by guitar chords: D, Em, D/F#, G, D/F#, Em, D/F#, G. The second staff continues the melody with chords: A, Em, D/F#, G, D/F#. The third staff features a first ending (1. A) and a second ending (2. A). The fourth staff starts with a repeat sign and includes chords: G, D/F#, Em. The fifth staff continues with chords: G, A, Bm, A, and a triplet of eighth notes. The sixth staff concludes with a first ending (1. A) and a second ending (2. A).